



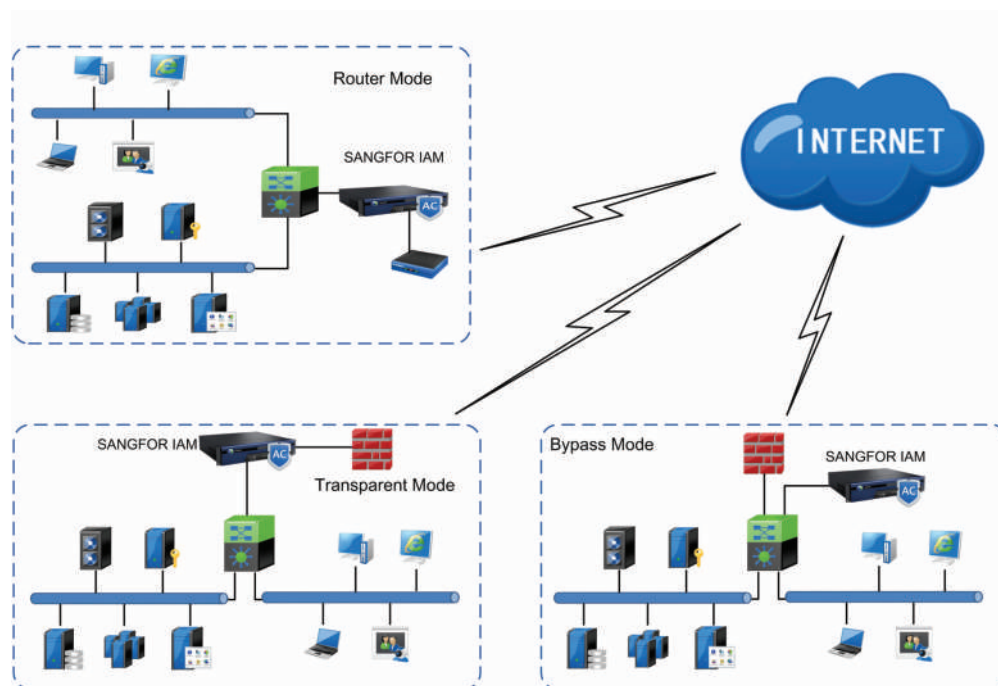
SANGFOR® IAM Product Features

Function	Description
Authentication	
User identification	IP, MAC, IP/MAC binding, username/password, third-party authentication such as LDAP/AD/RADIUS/POP3/PROXY, USB-KEY and hardware authentication; Single Sign-on (SSO) options include LDAP/POP3/Proxy and forced SSO of designated network segment/account; account control via public/private accounts and account validity period; account import options include text list, IP/MAC scanning, and even account and organization structures from Active Directory servers;
Authentication exception	Accounts can be renamed (in the IP/MAC/computer name formats) based on new users' IP segments; authentication exception-handling includes conflict detection, privileged control after authentication failure and page forward control after successful authentication;
Online access authorization	Multi-level user account management to align with organizational structure, allowing access control based on account, IP, application, behavior, content, period, etc.; Implements re-use, integration and forced inheritance of access privileges by combining object-based access policy templates; Monitoring of accumulated duration and maximum traffic for specified user applications;
Internet Access Control	
HTTP cache	The duplicated data is cached in RAM or disks of IAM. When users access these data, IAM gets the data from its cache and returns the data to the user, significantly enhancing the access speed (Webpage, files, HTTP online videos, images, etc.)
Webpage control	Contains extensive Zvelo URL database (450 million) that can be also manually customized; Support Webpage filtering based on URL/search word/keyword contained in Webpage; Support keyword-based filtering of outbound Webmail and Web post; fine-grained control such as allowing only reading post but not post thread, and only allowing receiving but not sending mail;
Advanced control	Encrypted SSL URL filtering; identifies and filters attempts to avoid management via public network proxies or encrypted proxy software; Capable to control behavior of sharing web access privileges with others via installed proxy software;
File control	Capable to control outbound file transmission via HTTP/FTP/email attachments, supports identification and blocking of outbound files based on file extensions and file types (to identify encrypted, compressed, extension name modified files);
Application identification	Over 700 application identification rules conveniently built-in to identify and control popular network protocols, including IM chat, network games, Web-based stock trading, P2P, streaming media, remote control, and proxy software;
Intelligent P2P identification	Identifies over 30 popular P2P application protocols such as BitTorrent, eMule, etc. with deep packet inspection (DPI); SANGFOR's patented intelligent P2P identification technology can further comprehensively identify and manage other variant P2P protocols, encrypted P2P behaviors and unknown P2P behaviors;
Email control	Supports complete blocking of email reception and sending, and filtering of outbound and inbound junk mail; filtering can be based on multiple conditions such as keyword, sender and receiver addresses; patented "Postponed Sending after Audit" option intercepts outbound email per predefined criteria before allowing delivery after manual examination;
Bandwidth management	Multiplexing and intelligent routing; bandwidth management based on wide range of criteria, including application type/Website type/file type, user, time, target IP, etc.; extranet-to-intranet access flow control and bandwidth management;

Function	Description
Audit and Report	
Real-time monitor	Real-time monitoring of CPU/hard disk/traffic/connection/session status, as well as online user information, traffic ranking and connection ranking; real-time utilization visibility of bandwidth channels;
Access audit (Optional)	Records a wide variety of audit information including: URL, Webpage title and content accessed (can record only Webpage content containing specific keywords), outbound file transmissions via HTTP and FTP and file content, names and behavior of files downloaded, plain text thread posting and emails, chat sessions on MSN, MSN Shell, Skype, Yahoo! Messenger, Google Talk, etc.; also records application behavior such as network gaming, stock trading, entertainment, P2P downloads and Telnet; tallies user traffic and access duration and audits Webpage/file/email access of extranet users on intranet servers;
Reporting	Supports various kinds of reports, including scheduled reporting of statistics, behaviors, trend, comparison, plus customized reporting of traffic statistics, queries, ranking, times and behavior of users and user groups;
Data center features	Massed log storage with built-in and independent data center support; administrators can easily manage users based on a hierarchical permissions structure;
Audit-free Key	Prevents access audits for users assigned audit-free keys; audit-free status cannot be arbitrarily changed by system administrator (Optional);
Data center authentication key	Data center administrators can view recorded audit logs only via audit check key (Optional);
Content search	Google-like log search tool to enable the manager to locate logs quickly by entering multiple keywords, including the search and location of the content of the log attachments; supports the title subscription, and supports automatically sending the search results to designated mailbox;
Network Security	
Proxy	HTTP proxy; Socks 5 proxy
Online access security	> Built-in firewall thwarts a range of security threats to gateway reliability, including DoS attacks, ARP spoofing, etc.; > Identifies and filters viruses from external network (Optional); > Built-in professional anti-virus engine in router mode;
End-point detection	Detects end-point profile (including OS version/patch, system processes, disk files, registry, etc.) and can prompt or reject access for end-points not meeting IT requirements or passing security tests;
Gateway anti-virus	Built-in professional anti-virus engine supports gateway virus elimination (Optional);
Equipment Management	
Deployment mode	Deployable via router, bridge, bypass and multi-bridge topologies, with active-standby for HA;
Device management	Web based management access; functionality of different modules can be assigned to different administrators as needed, via a hierarchical management paradigm.

SANGFOR® IAM Product Family

Typical Deployment



Model Specifications

Model	Profile	RAM	HD Capacity	Throughput (without proxy)	Concurrent Connections (without proxy)	Throughput (with proxy)	Concurrent Connections (with proxy)	Concurrent Users
M5000	1U	512M	160GB	5~8 Mbps	30,000	N/A	N/A	50~100
M5100	1U	1G	160GB	10~20 Mbps	40,000	5~15 Mbps	7,000	100~200
M5400	1U	2G	160GB	25~50 Mbps	120,000	18~35 Mbps	15,000	200~500
M5500	2U	2G	500GB	60~130 Mbps	400,000	40~75 Mbps	20,000	500~1,200
M5600	2U	4G	500GB	140~300 Mbps	550,000	100~150 Mbps	60,000	1,200~3,000
M5800	2U	4G	500GB	300~400 Mbps	700,000	150~250 Mbps	85,000	3,000~5,000
M5900	2U	4G	500GB	400 Mbps ~1Gbps	1,000,000	250~500 Mbps	100,000	5,000~10,000

Power and Physical Specifications

Model	Dual power supplies	Power [Watt] (Typical)	Temperature	Relative Humidity	System Dimensions (WxLxH)	System Weight
M5000	N/A	60W	-10~50°C	5%~95% non-condensing	44×30×5 cm ³	4.0 Kg
M5100	N/A	60W	-10~50°C	5%~95% non-condensing	44×30×5 cm ³	4.0 Kg
M5400	N/A	200W	-10~50°C	5%~95% non-condensing	44×30×5 cm ³	4.0 Kg
M5500	N/A	250W	-10~50°C	5%~95% non-condensing	43×30×5 cm ³	4.0 Kg
M5600	✓	400W	-10~50°C	5%~95% non-condensing	44×37×5 cm ³	6.5 Kg
M5800	✓	460W	-10~50°C	5%~95% non-condensing	44×50×9 cm ³	11.0 Kg
M5900	✓	460W	-10~50°C	5%~95% non-condensing	44×43×9 cm ³	17.0 Kg

Network Interfaces

Model	Bypass (copper)	10/100 Base-T			10/100/1000 Base-T			Other Interfaces		
		WAN	LAN	DMZ	WAN	LAN	DMZ	SFP	Serial Port	USB
M5000	1 pair	N/A	N/A	N/A	2	1	1	N/A	RJ45×1	1
M5100	1 pair	N/A	N/A	N/A	2	1	1	N/A	RJ45×1	2
M5400	1 pair	N/A	N/A	N/A	4	1	1	N/A	RJ45×1	2
M5500	2 pair	N/A	N/A	N/A	2	1	1	2	RJ45×2	2
M5600	3 pair	N/A	N/A	N/A	4	1	1	4	RJ45×1	1
M5800	3 pair	N/A	N/A	N/A	4	1	1	4	RJ45×1	1
M5900	2 pair	N/A	N/A	N/A	2	1	1	4	Rj45×1	2